



Product Service

CERTIFICATE

No. Z2 16 04 78365 009

Holder of Certificate: **Zhong Gui Sona (XiaMen) New Energy Co.,Ltd**

No.1001, Wanjia Chun Road
 Industrial Area(Xiang An)Torch High-tech Zone
 361100 Xiamen
 PEOPLE'S REPUBLIC OF CHINA



Certification Mark:



Product:

**Crystalline Silicon Terrestrial Photovoltaic (PV) Modules
 Mono & Poly-crystalline Silicon Photovoltaic (PV) Module**

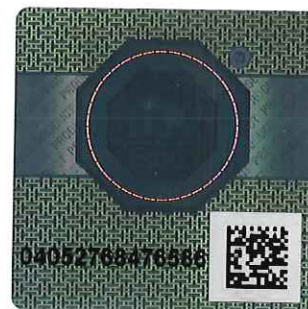
The product was tested on a voluntary basis and complies with the essential requirements. The certification mark shown above can be affixed on the product. It is not permitted to alter the certification mark in any way. In addition the certification holder must not transfer the certificate to third parties. See also notes overleaf.

Test report no.: 64290150496702

Valid until: 2021-04-18

Date, 2016-04-22

(Harry Shubo Zhang)



Page 1 of 3



Product Service

CERTIFICATE
No. Z2 16 04 78365 009

Model(s):

SNSxxxM-72 (xxx=295-355, in step of 5);
 SNSxxxM-60 (xxx=245-295, in step of 5);
 SNSxxxM-54 (xxx=220-265, in step of 5);
 SNSxxxM-48 (xxx=195-235, in step of 5);
 SNSxxxM-36 (xxx=150-175, in step of 5);
 SNSxxxP-72 (xxx=290-350, in step of 5);
 SNSxxxP-60 (xxx=240-290, in step of 5);
 SNSxxxP-54 (xxx=220-260, in step of 5);
 SNSxxxP-48 (xxx=195-235, in step of 5);
 SNSxxxP-36 (xxx=145-175, in step of 5)

Parameters:

Rated output power
 at STC: page 3
 Application class: Class A
 Fire safety class: Class C
 Maximum system voltage: 1000V DC
 Test Laboratory: Yangzhou Opto-Electrical Products
 Testing Institute
 No.10 West Kaifa Road, Yangzhou,
 225009 Jiangsu, P. R. China
 Construction: Framed with Junction box,
 Cable and Connectors.

**Tested
 according to:**

IEC 61215(ed.2)
 EN 61215:2005
 IEC 61730-1(ed.1);am1;am2
 EN 61730-1:2007/A1:2012
 IEC 61730-2(ed.1);am1
 EN 61730-2:2007/A1:2012

**Production
 Facility(ies):**

78365

Page 2 of 3



Product Service

CERTIFICATE

No. Z2 16 04 78365 009

Model	Rated output power at STC
SNS295M-72, SNS300M-72, SNS305M-72, SNS310M-72, SNS315M-72, SNS320M-72, SNS325M-72, SNS330M-72, SNS335M-72, SNS340M-72, SNS345M-72, SNS350M-72, SNS355M-72	295 W, 300 W, 305 W, 310 W, 315 W, 320 W, 325 W, 330 W, 335 W, 340 W, 345 W, 350 W, 355 W
SNS245M-60, SNS250M-60, SNS255M-60, SNS260M-60, SNS265M-60, SNS270M-60, SNS275M-60, SNS280M-60, SNS285M-60, SNS290M-60, SNS295M-60	245 W, 250 W, 255 W, 260 W, 265 W, 270 W, 275 W, 280 W, 285 W, 290 W, 295 W
SNS220M-54, SNS225M-54, SNS230M-54, SNS235M-54, SNS240M-54, SNS245M-54, SNS250M-54, SNS255M-54, SNS260M-54, SNS265M-54	220 W, 225 W, 230 W, 235 W, 240 W, 245 W, 250 W, 255 W, 260 W, 265 W
SNS195M-48, SNS200M-48, SNS205M-48, SNS210M-48, SNS215M-48, SNS220M-48, SNS225M-48, SNS230M-48, SNS235M-48	195 W, 200 W, 205 W, 210 W, 215 W, 220 W, 225 W, 230 W, 235 W
SNS150M-36, SNS155M-36, SNS160M-36, SNS165M-36, SNS170M-36, SNS175M-36	150 W, 155 W, 160 W, 165 W, 170 W, 175 W
SNS290P-72, SNS295P-72, SNS300P-72, SNS305P-72, SNS310P-72, SNS315P-72, SNS320P-72, SNS325P-72, SNS330P-72, SNS335P-72, SNS340P-72, SNS345P-72, SNS350P-72	290 W, 295 W, 300 W, 305 W, 310 W, 315 W, 320 W, 325 W, 330 W, 335 W, 340 W, 345 W, 350 W
SNS240P-60, SNS245P-60, SNS250P-60, SNS255P-60, SNS260P-60, SNS265P-60, SNS270P-60, SNS275P-60, SNS280P-60, SNS285P-60, SNS290P-60	240 W, 245 W, 250 W, 255 W, 260 W, 265 W, 270 W, 275 W, 280 W, 285 W, 290 W
SNS220P-54, SNS225P-54, SNS230P-54, SNS235P-54, SNS240P-54, SNS245P-54, SNS250P-54, SNS255P-54, SNS260P-54	220 W, 225 W, 230 W, 235 W, 240 W, 245 W, 250 W, 255 W, 260 W
SNS195P-48, SNS200P-48, SNS205P-48, SNS210P-48, SNS215P-48, SNS220P-48, SNS225P-48, SNS230P-48, SNS235P-48	195 W, 200 W, 205 W, 210 W, 215 W, 220 W, 225 W, 230 W, 235 W
SNS145P-36, SNS150P-36, SNS155P-36, SNS160P-36, SNS165P-36, SNS170P-36, SNS175P-36	145 W, 150 W, 155 W, 160 W, 165 W, 170 W, 175 W

Test report no.: 64290150496702

Date, 2016-04-22

Page 3 of 3