



Product Service

CERTIFICATE

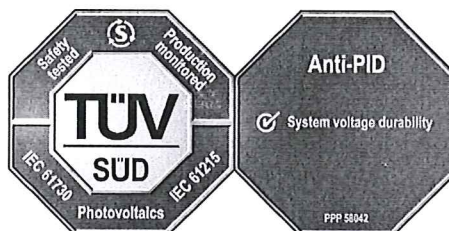
No. Z2 16 04 78365 011

Holder of Certificate: **Zhong Gui Sona (XiaMen) New Energy Co.,Ltd**

No.1001, Wanjia Chun Road
Industrial Area(Xiang An)Torch High-tech Zone
361100 Xiamen
PEOPLE'S REPUBLIC OF CHINA



Certification Mark:



Product:

**Crystalline Silicon Terrestrial Photovoltaic (PV) Modules
Poly-crystalline Silicon Photovoltaic (PV) Module**

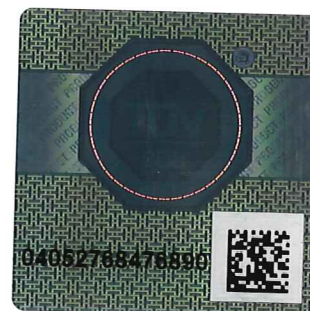
The product was tested on a voluntary basis and complies with the essential requirements. The certification mark shown above can be affixed on the product. It is not permitted to alter the certification mark in any way. In addition the certification holder must not transfer the certificate to third parties. See also notes overleaf.

Test report no.: 64290150497001

Valid until: 2021-04-21

Date, 2016-04-28

(Harry Shubo Zhang)



Page 1 of 3



Product Service

CERTIFICATE
No. Z2 16 04 78365 011

Model(s): SNSxxxP-72 (xxx=290-350, in step of 5);
 SNSxxxP-60 (xxx=240-290, in step of 5);

Parameters:

Rated output power at STC:	page 3
Application class:	Class A
Fire safety class:	Class C
Maximum system voltage:	1000V DC
PID test condition:	±1000V DC, 85%RH, 60°C, 96h
Test Laboratory:	Yangzhou Opto-Electrical Products Testing Institute No.10 West Kaifa Road, Yangzhou, 225009 Jiangsu, P. R. China
Construction:	Framed with Junction box, Cable and Connectors.

Tested according to: IEC 61215(ed.2)
 IEC 61730-1(ed.1);am1;am2
 IEC 61730-2(ed.1);am1
 PPP 58042B:2015

Production Facility(ies): 78365



Product Service

C E R T I F I C A T E

No. Z2 16 04 78365 011

Model	Rated output power at STC
SNS290P-72, SNS295P-72, SNS300P-72, SNS305P-72, SNS310P-72, SNS315P-72, SNS320P-72, SNS325P-72, SNS330P-72, SNS335P-72, SNS340P-72, SNS345P-72, SNS350P-72	290 W, 295 W, 300 W, 305 W, 310 W, 315 W, 320 W, 325 W, 330 W, 335 W, 340 W, 345 W, 350 W
SNS240P-60, SNS245P-60, SNS250P-60, SNS255P-60, SNS260P-60, SNS265P-60, SNS270P-60, SNS275P-60, SNS280P-60, SNS285P-60, SNS290P-60	240 W, 245 W, 250 W, 255 W, 260 W, 265 W, 270 W, 275 W, 280 W, 285 W, 290 W

Test report no.: 64290150497001

Date, 2016-04-28

Page 3 of 3